

CHRIS AND ALLY RICHARD

# CRUISING THE COLUMBIA



## AGENDA

- ▶ Locations
- ▶ Navigation
- ▶ Bridges
- ▶ Rafting Etiquette
- ▶ Docking Readiness
- ▶ Tides



## EQUIPMENT

- ▶ Fenders: 4 minimum
  - ▶ Tip: fender covers help prevent squeaking!
- ▶ Lines: 4 minimum that are the length of vessel
  - ▶ Tip: 3-strand line provides stretch and limits squeaking too!
- ▶ Anchors: bow and stern

# PROCEDURE

- ▶ Wear closed toe shoes
- ▶ Have your lines and fenders ready early
- ▶ Come in slow
- ▶ Line order: midship, bow, stern. Or whichever is best for the situation
- ▶ You are the captain of your boat!

## RAFTING

- ▶ Tie up to similar sized boat
- ▶ Wear closed toe shoes
- ▶ Have your lines and fenders ready early
- ▶ Keep spreaders 2-3 ft fore/aft

### DOS AND DON'TS

- ▶ Traverse rafted boats forward of the mast
- ▶ Treat other boats the way you want your boat treated
- ▶ Secure halyards to cut down on noise
- ▶ Keep track of your dingy
- ▶ Keep pets on leash
- ▶ Charge batteries between 10:00 - 2:00 (1000-1400).

## CRUISING THE COLUMBIA

# EVENTS

- ▶ Daily Walks
- ▶ Happy Hour
- ▶ Pot Luck
- ▶ Jam Session
- ▶ Relaxing
- ▶ Sharing hobbies
- ▶ Pirates' Cruise
- ▶ Rowing



## DOCKS AND ANCHORAGE'S

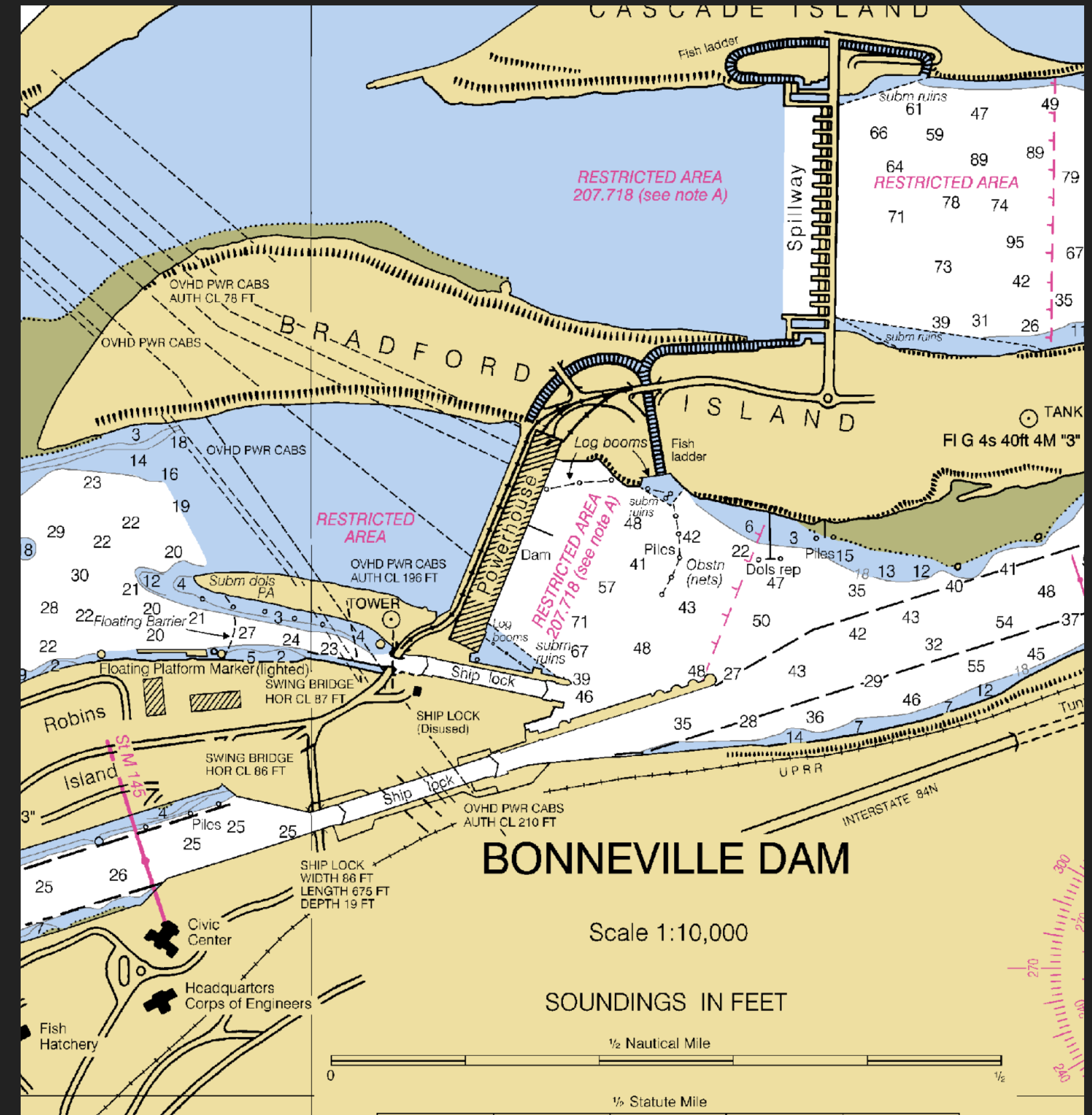
- ▶ Bonneville Locks
- ▶ Sand Island
- ▶ Westport
- ▶ Beacon Rock
- ▶ St. Helens
- ▶ Cathlamet
- ▶ Camas
- ▶ Martin Slough
- ▶ Steamboat Slough
- ▶ Bartlett
- ▶ Rainier
- ▶ Warren Slough
- ▶ Schweitzer
- ▶ Walker Island
- ▶ Astoria
- ▶ Hadley's
- ▶ Longview Yacht Club
- ▶ Ilwaco
- ▶ Coon Island
- ▶ Bat Water Station
- ▶ Gilbert River
- ▶ Gull Island

# CRUISING THE COLUMBIA

## BONNEVILLE LOCKS

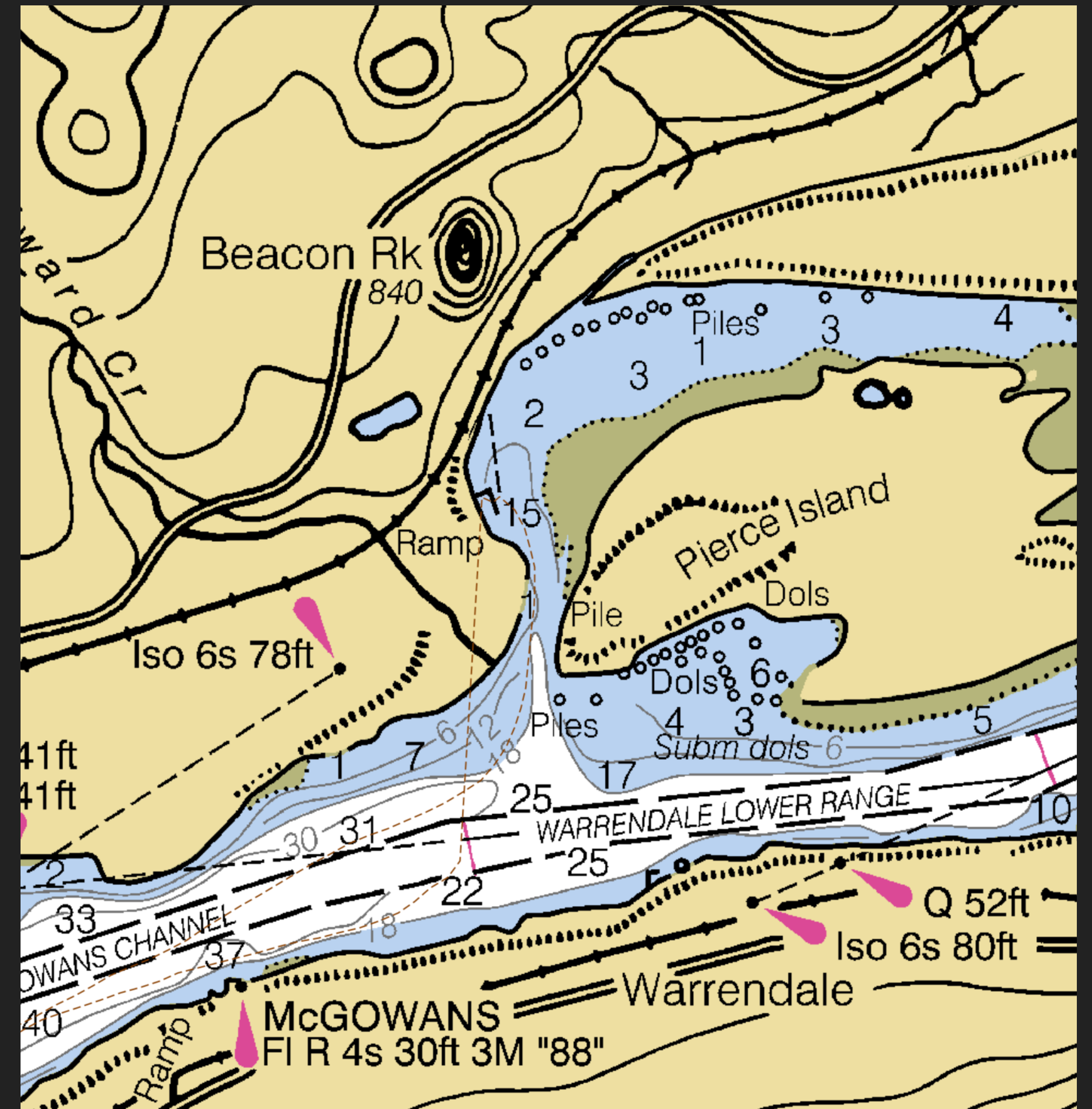
WUJ33 BONNEVILLE

- ▶ Access to upper river
  - ▶ Cascade Locks
  - ▶ Government Cove
- ▶ Call ahead for lock opening times
- ▶ Contact lock master on channel 14
  - ▶ call 541-374-8323
- ▶ Strong current- stay to OR side



### BEACON ROCK

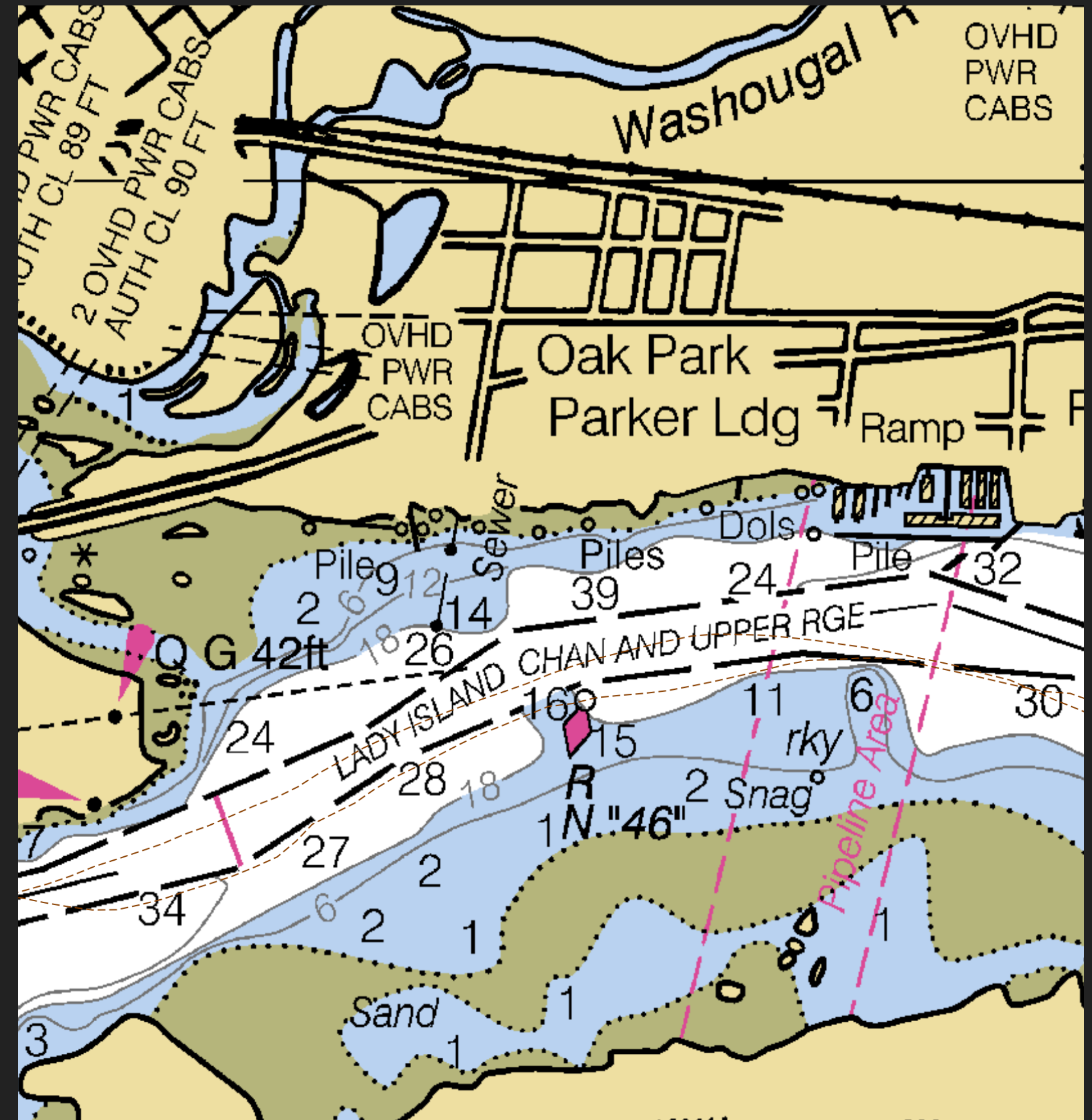
- ▶ Public dock
- ▶ Moorage fee
- ▶ Hike for groceries and ice
- ▶ 1 mile to Beacon Rock
- ▶ High current, aim higher than you think and use more power than normal.
- ▶ Follow Oregon side
- ▶ Watch chart for rock bars

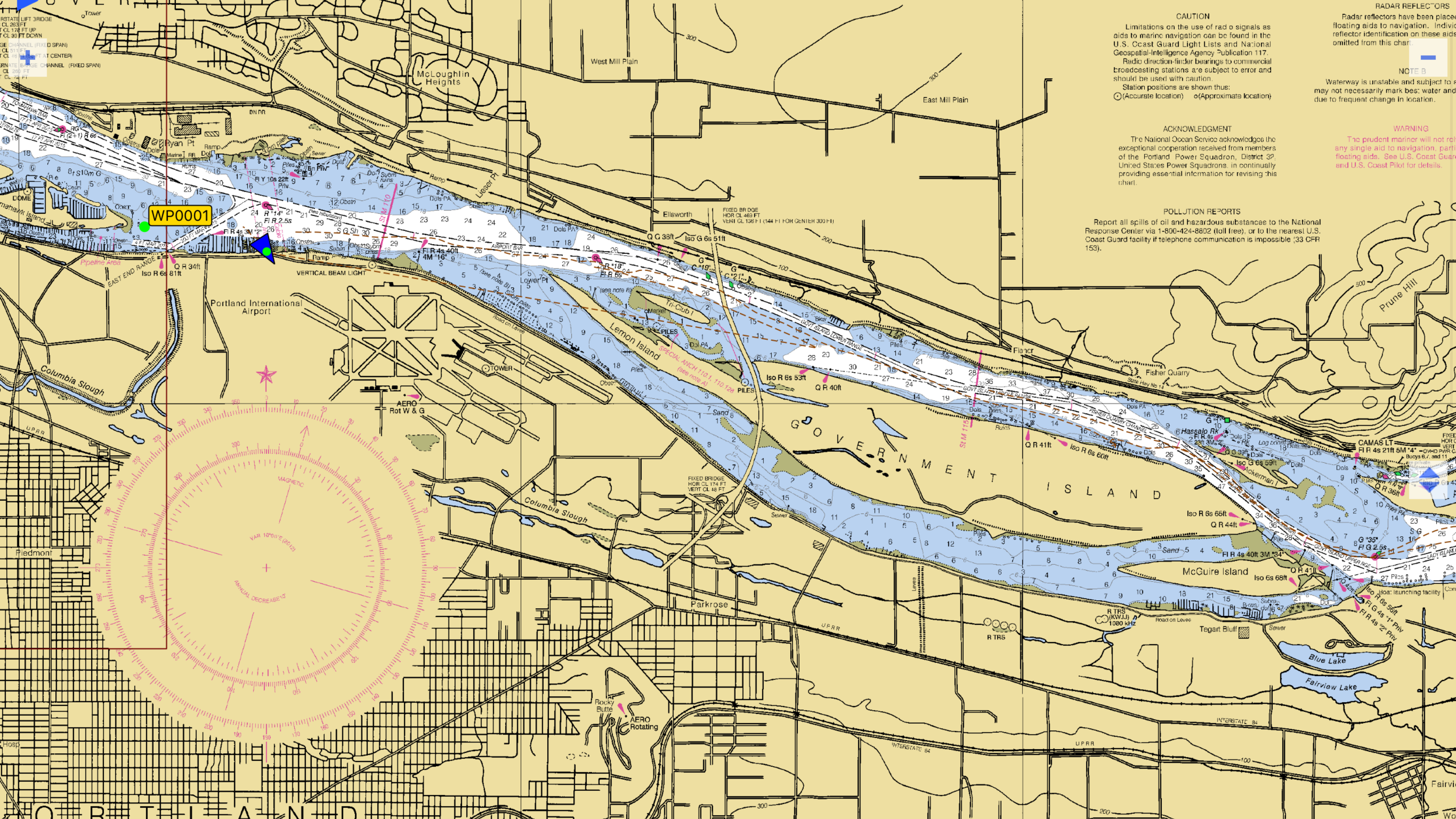




## CAMAS-WASHOUGLA MARINA

- ▶ Public dock
- ▶ Moorage fee
- ▶ Ice
- ▶ Keep an eye on your chart





**CAUTION**  
Limitations on the use of radio signals as aids to marine navigation can be found in the U.S. Coast Guard Light Lists and National Geospatial-Intelligence Agency Publication 117. Radio direction-finder bearings to commercial broadcasting stations are subject to error and should be used with caution.  
Station positions are shown thus:  
⊙ (Accurate location)    ○ (Approximate location)

**ACKNOWLEDGMENT**  
The National Ocean Service acknowledges the exceptional cooperation received from members of the Portland Power Squadron, District 32, United States Power Squadrons, in continually providing essential information for revising this chart.

**POLLUTION REPORTS**  
Report all spills of oil and hazardous substances to the National Response Center via 1-800-424-8802 (toll free), or to the nearest U.S. Coast Guard facility if telephone communication is impossible [33 CFR 153].

**RADAR REFLECTORS**  
Radar reflectors have been placed on floating aids to navigation. Individual reflector identification on these aids is omitted from this chart.

**NOTE B**  
Waterway is unstable and subject to change. This chart may not necessarily mark best water and due to frequent change in location.

**WARNING**  
The prudent mariner will not rely on any single aid to navigation, particularly floating aids. See U.S. Coast Guard and U.S. Coast Pilot for details.

WP0001



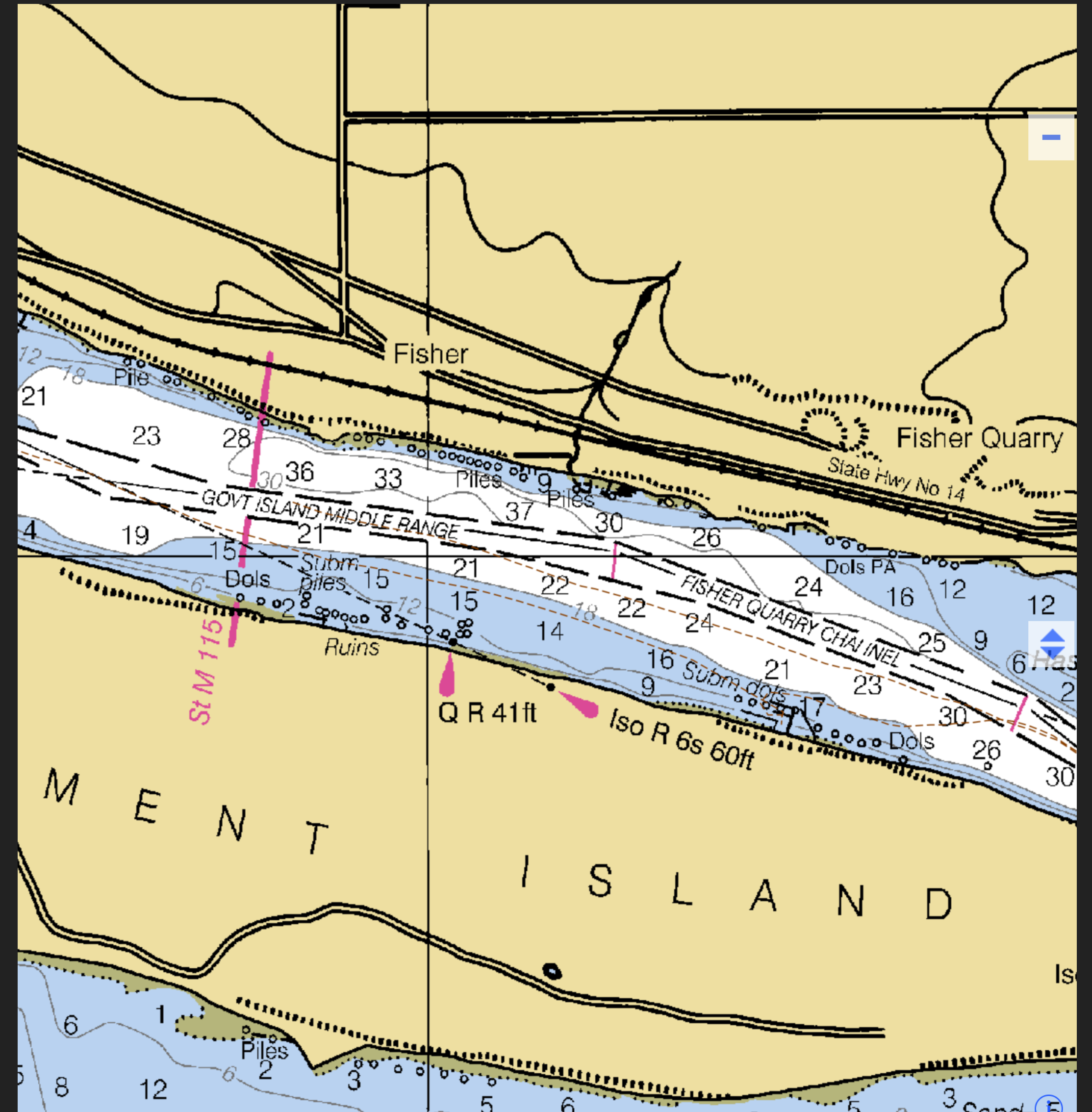
### BARTLETT (EAST DOCK GOV. IS.)

- ▶ Free public dock
- ▶ First and last cruise of the season
- ▶ Covered area on island
- ▶ Great for walking on the island
- ▶ Dog friendly



# SCHWITTER LANDING (W GOV. IS.)

- ▶ Pirates cruise location
- ▶ Backup location for Memorial Day weekend cruise
- ▶ Free dock
- ▶ Dog friendly (burrs on island)
- ▶ Beach to play on.



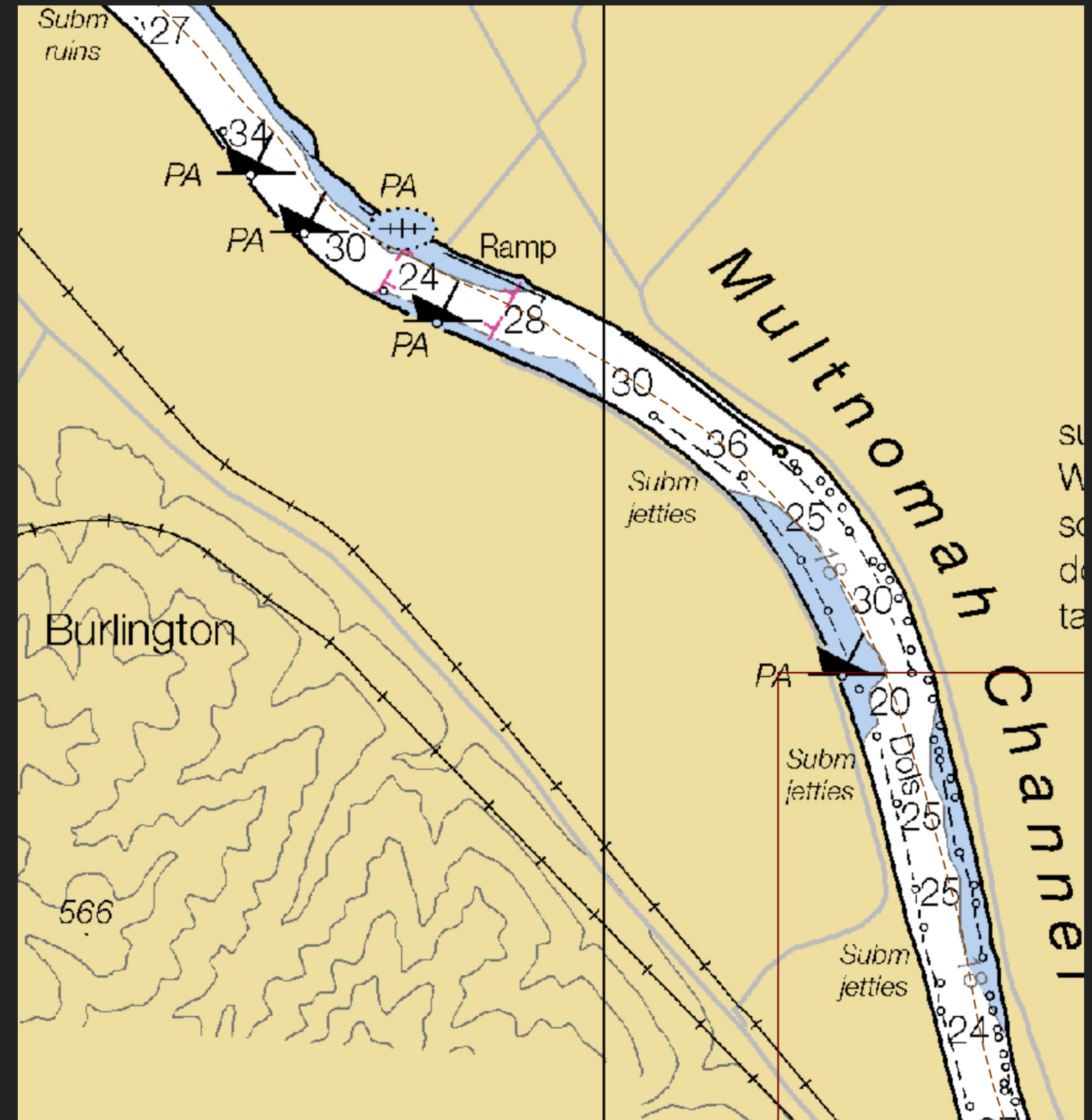
## BRIDGES

- ▶ Channel 13 for all bridges. Stay on till cleared.
- ▶ I-5 bridge:
  - ▶ Fixed span 72'
  - ▶ Lifted 175"
- ▶ Railroad:
  - ▶ Fixed 39'
  - ▶ Swung- no obstructions
  - ▶ Be patient, can take 30 min to 1.5 hours
- ▶ Sauvie Island Bridge
  - ▶ Fixed 76'



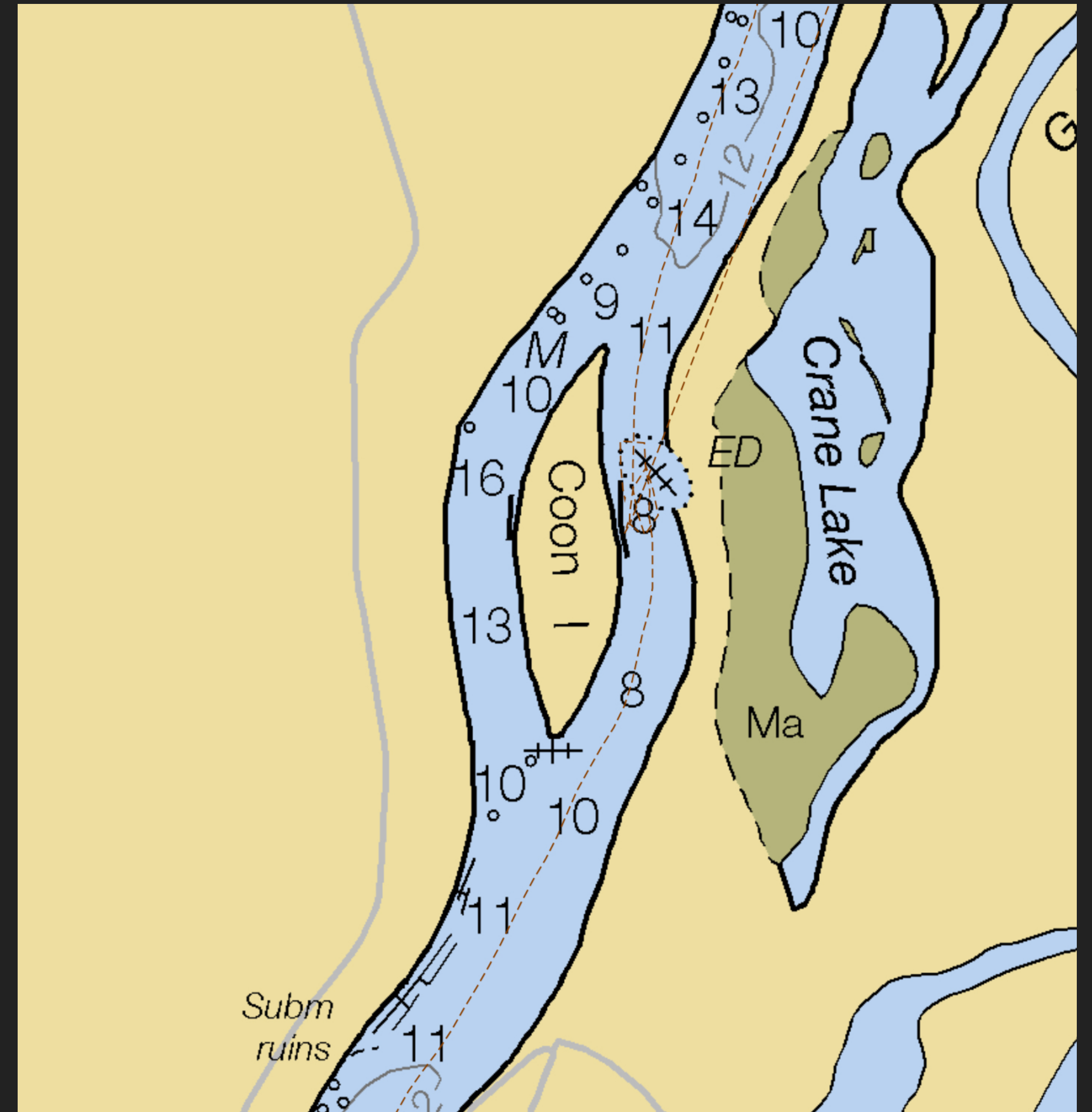
### HADLEY'S LANDING

- ▶ Located down from the Sauvies Island Bridge on the Multnomah Channel
- ▶ One dock, usually requires rafting when in large groups
- ▶ Walking trails
- ▶ Free Public docks
- ▶ Access can be limited by high water



### COON ISLAND

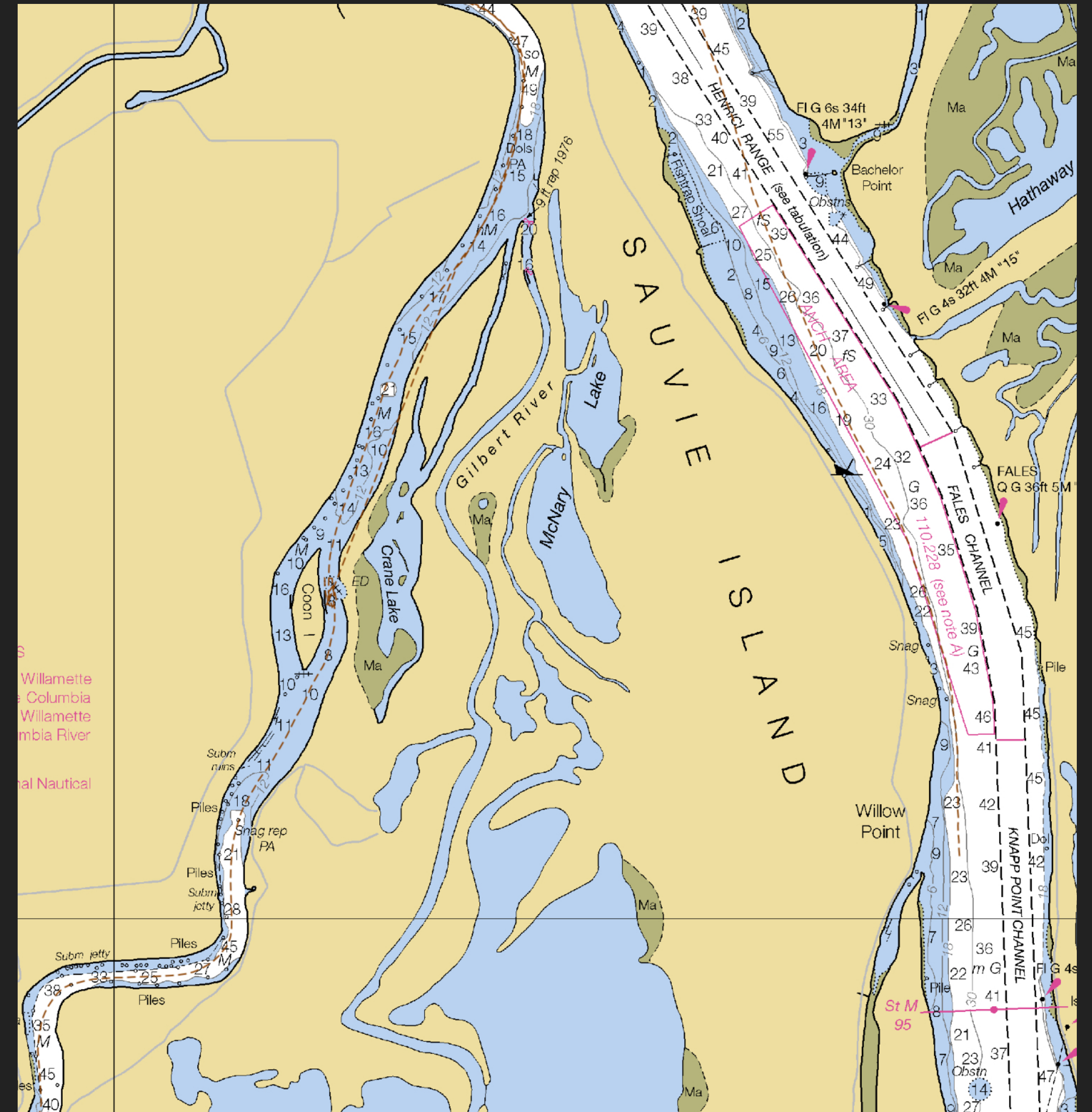
- ▶ Two dock options west/east
- ▶ Solar toilets on island
- ▶ Trail around island
- ▶ Free docking



# CRUISING THE COLUMBIA

## GILBERT RIVER

- ▶ Small public dock (Brand New!)
- ▶ No access to land
- ▶ Access to Sturgeon Lake
- ▶ Hard clay bottom, difficult to anchor



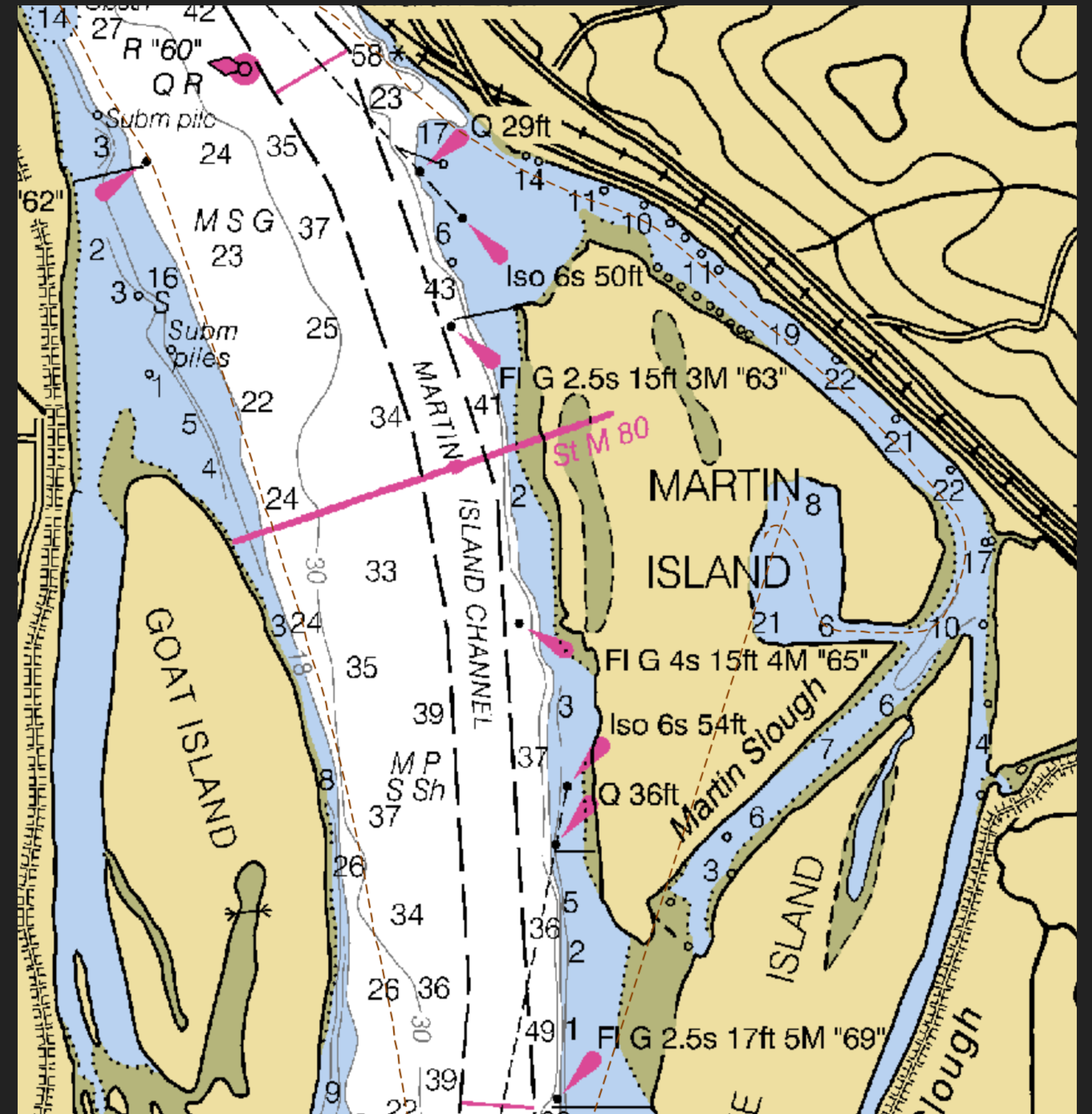
-

-



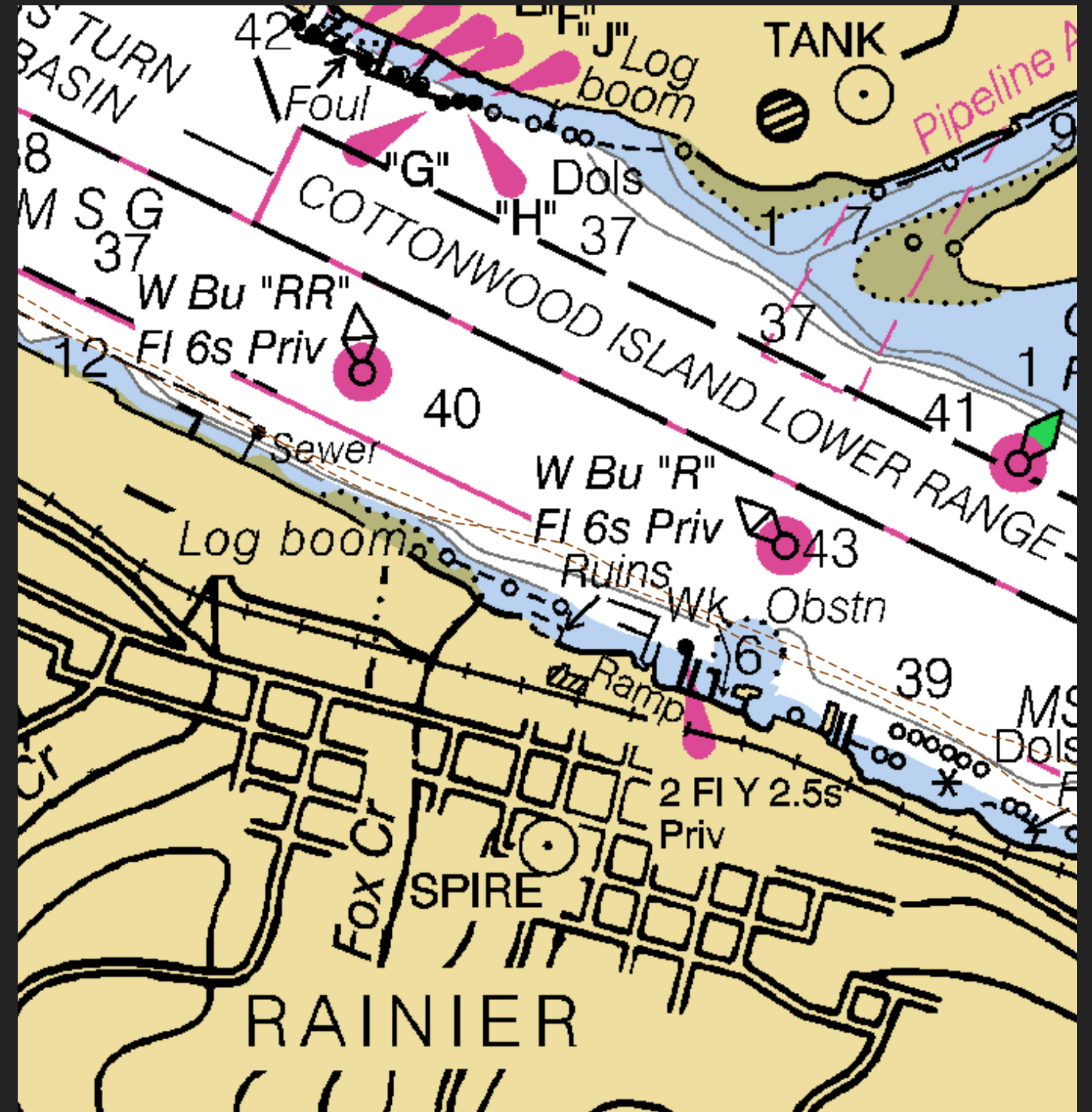
# MARTIN SLOUGH

- ▶ Protected anchorage
- ▶ Two docks
  - ▶ Dolphin- Don't use
  - ▶ CRYA- open to others and a really nice dock
- ▶ Watch for deadheads
- ▶ Best to come and go at high tide



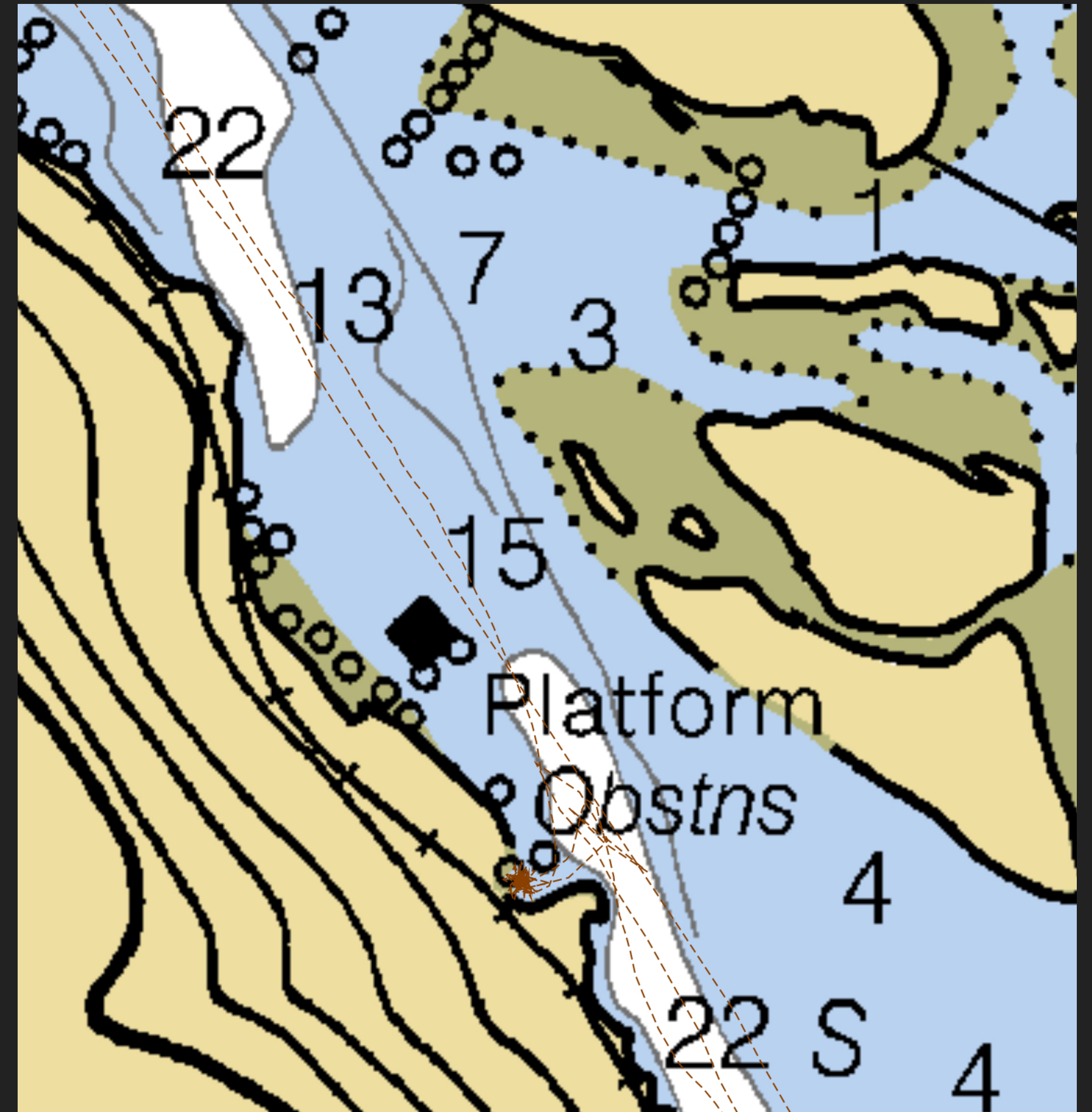
### RAINIER

- ▶ Public docks
- ▶ Ice
- ▶ Restaurants
- ▶ 72 Hour limit, must notify city hall
- ▶ Pump out



## WALKER ISLAND

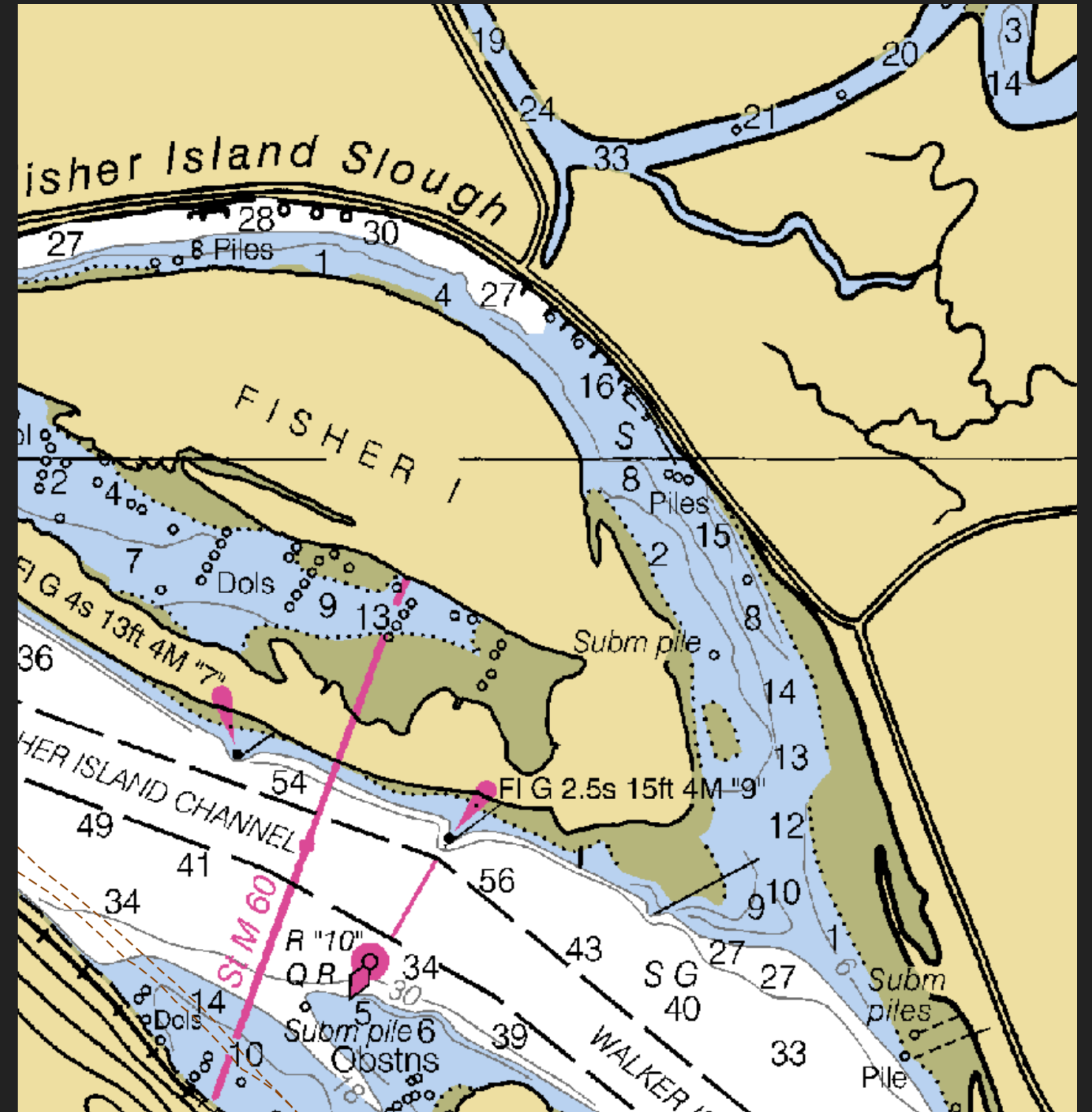
- ▶ Jacks Dock- open but priority to CRYC.
- ▶ Anchoring in the cove
- ▶ Walking on the tracks
- ▶ Short dinghy ride over to walker for more walking
- ▶ Great place to beat the heat in the afternoon





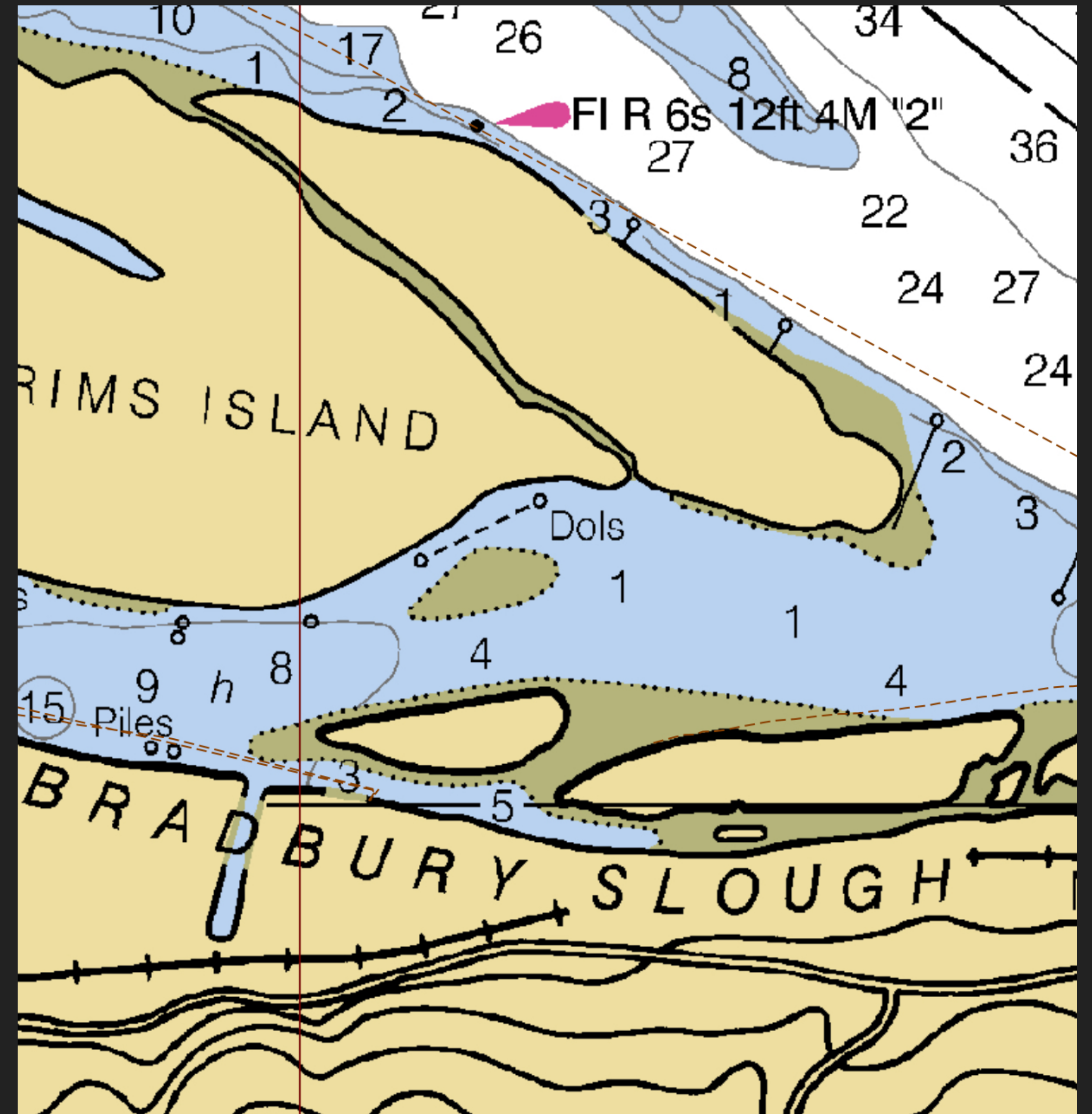
## LONGVIEW YACHT CLUB

- ▶ Who's been here to tell us about it?



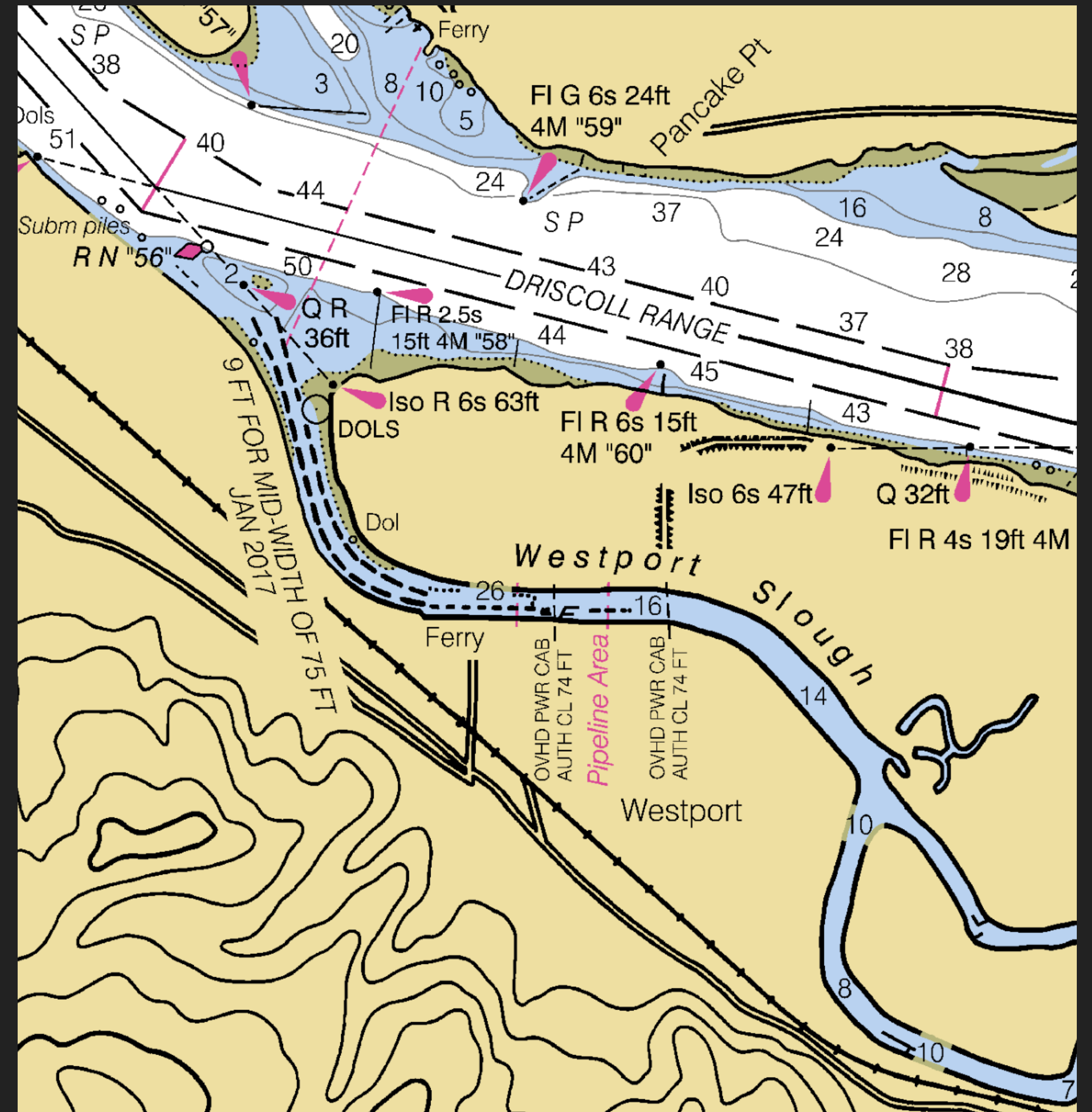
## BATWATER STATION

- ▶ Private dock
- ▶ Call ahead
- ▶ Located behind Crims Island



## WESTPORT SLOUGH

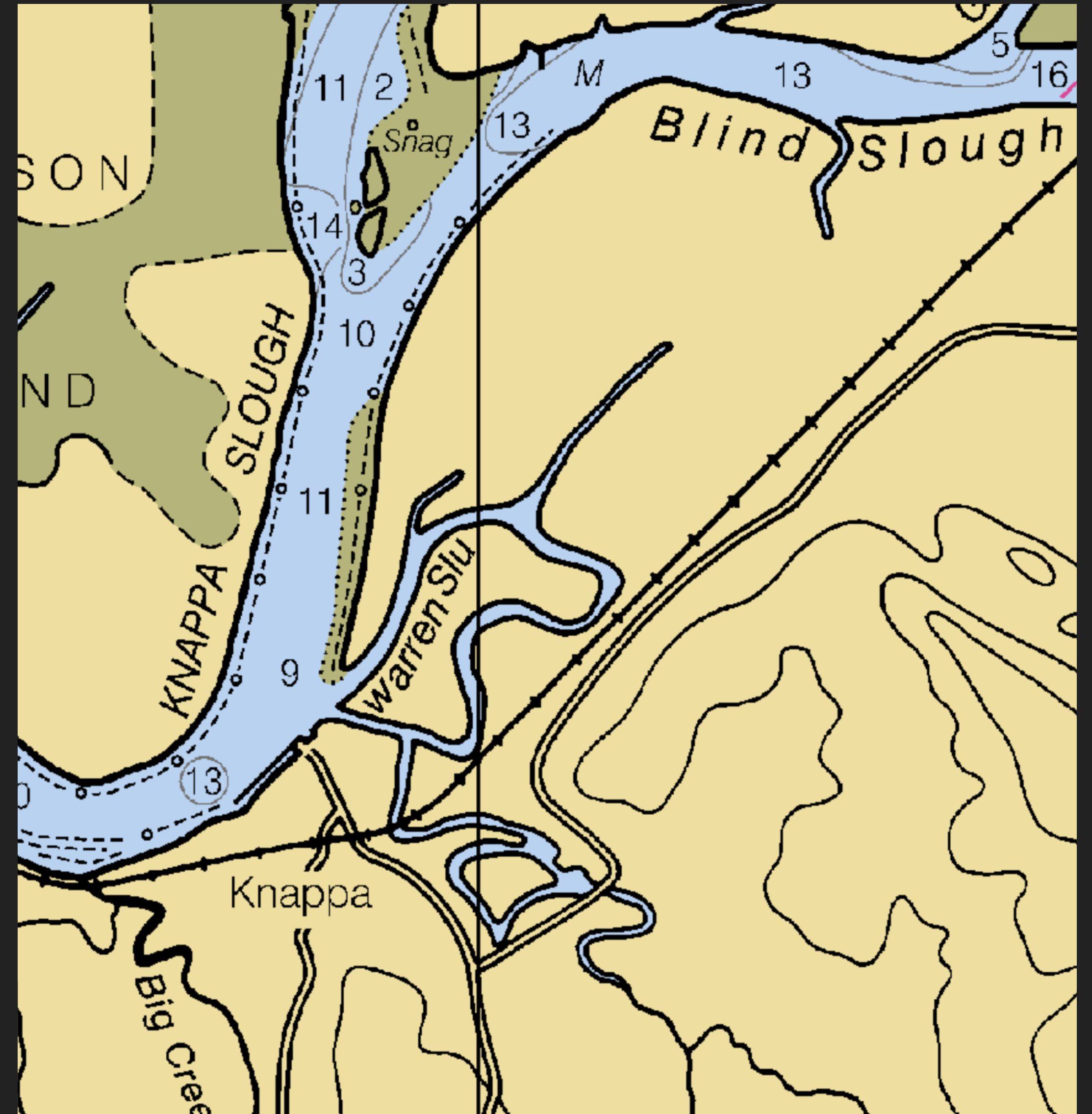
- ▶ Quiet + No Wind
- ▶ Low Usage
- ▶ Great dingy/kayak adventure zone
- ▶ Watch for ferry
- ▶ Check yearbook for directions
- ▶ BRAND NEW DOCK with bathroom





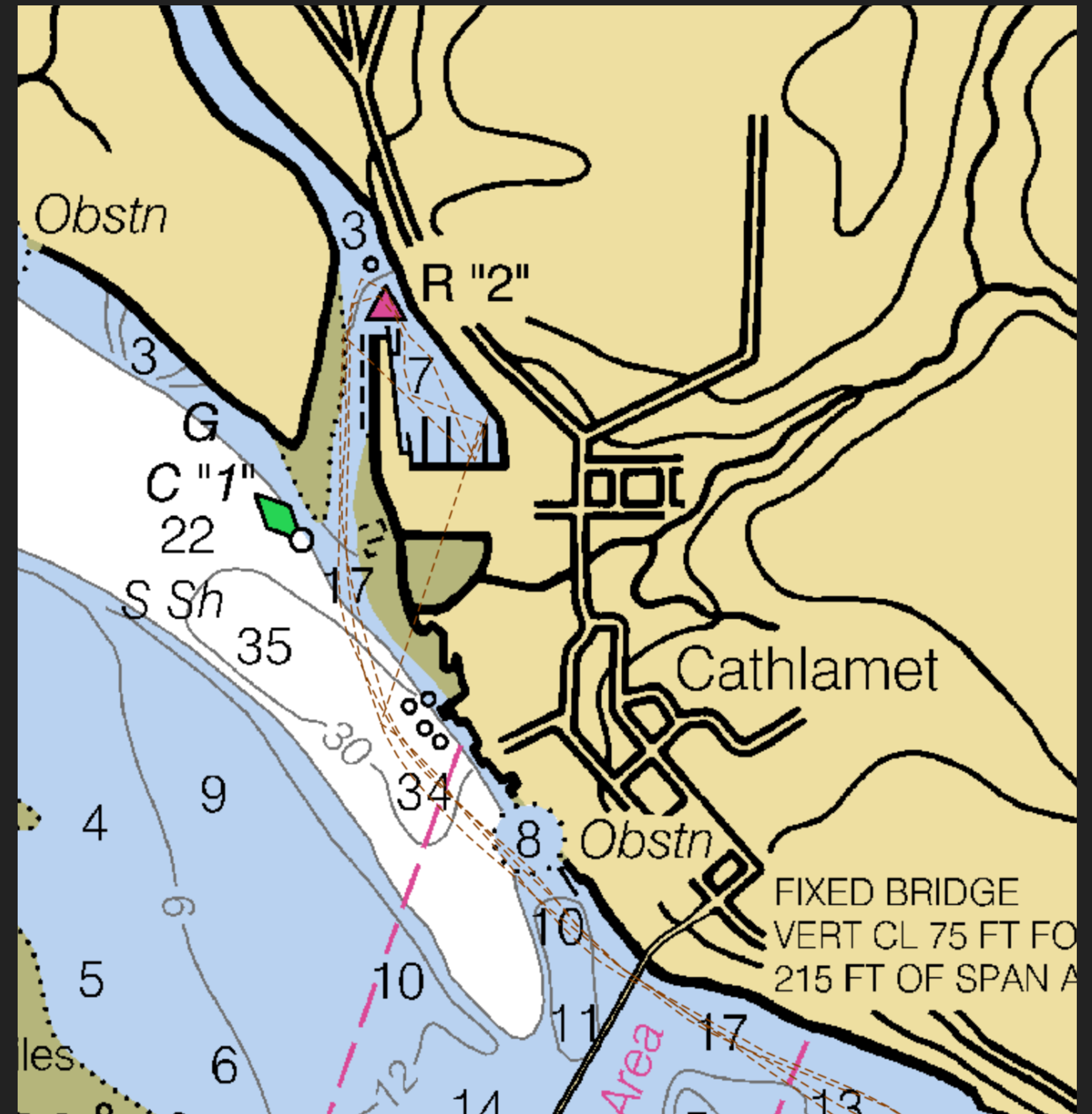
## WARREN SLOUGH

- ▶ Quiet+No Wind
- ▶ Dingy adventure zone
- ▶ Tip: use a trip line on anchor



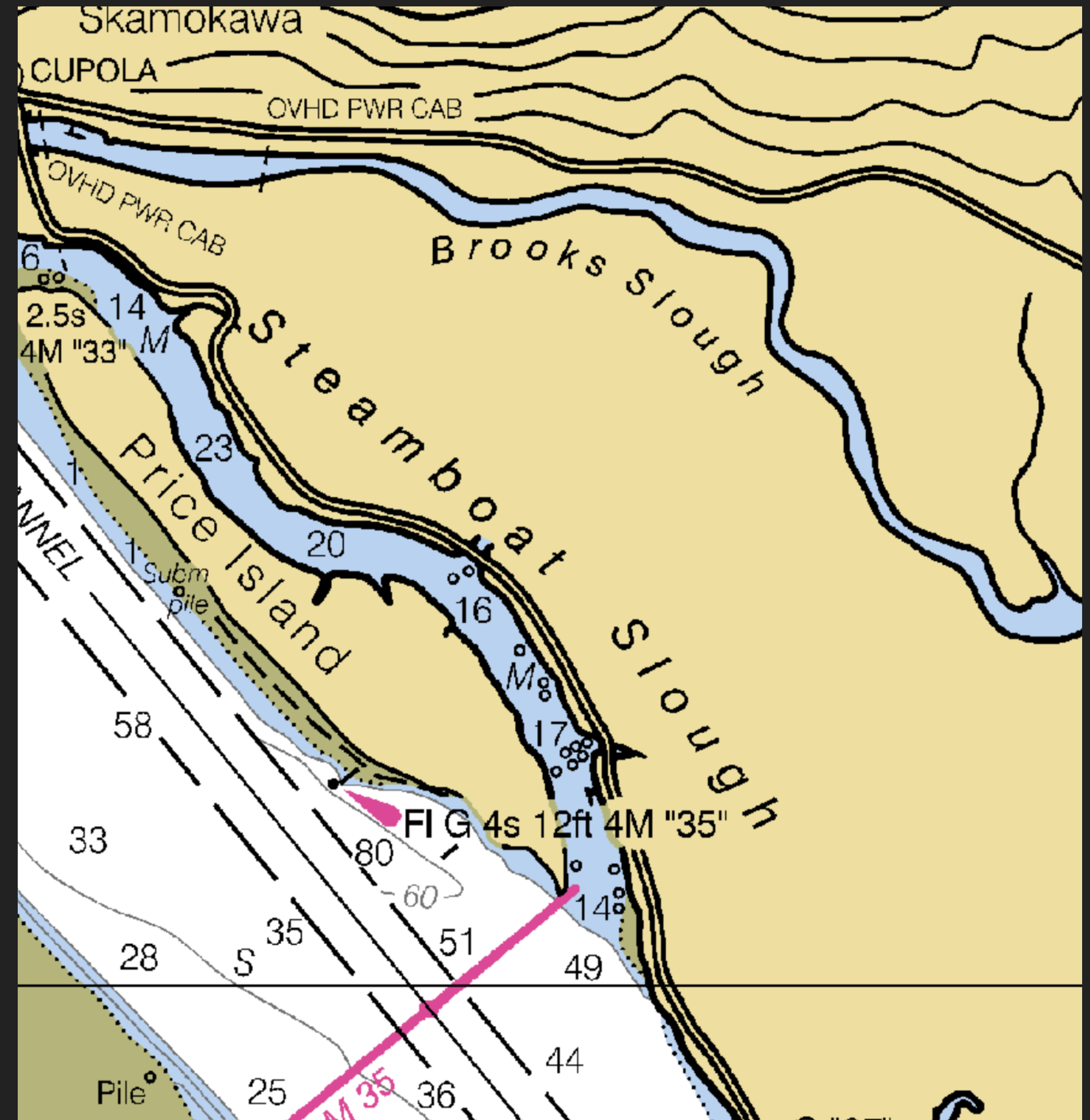
### CATHLAMET

- ▶ Fuel + Power
- ▶ Restrooms + Showers
- ▶ Quiet + No Wind
- ▶ Groceries
- ▶ Restaurants and Brewery
- ▶ Come and go on a high tide



# STEAMBOAT SLOUGH

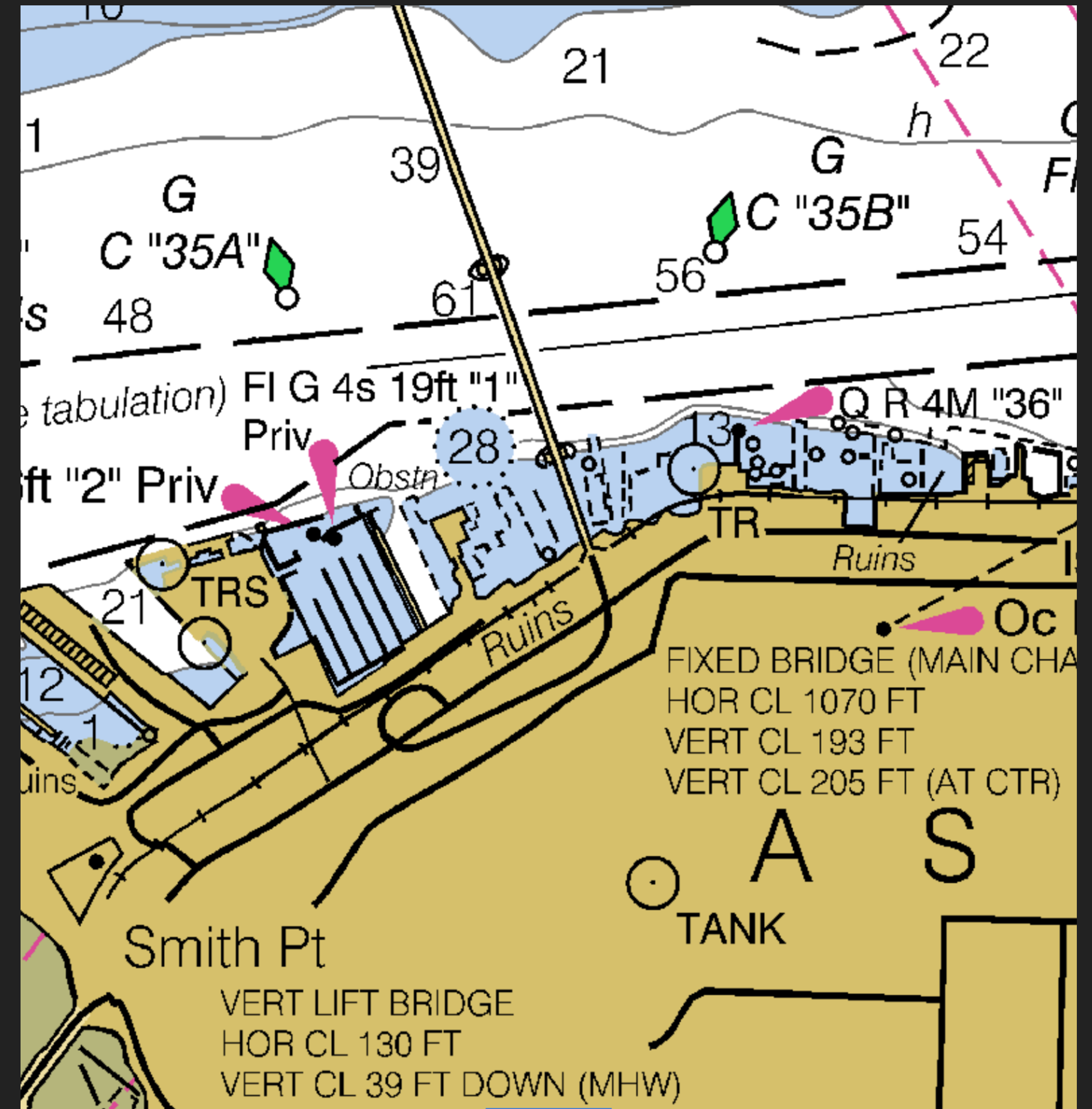
- ▶ Quiet + Limited Wind
- ▶ Tip: trip line on anchor or tie to piling
- ▶ Groceries
- ▶ Restaurants (limited)





## ASTORIA WEST BASIN

- ▶ Fuel
- ▶ Pump out
- ▶ Restrooms + Showers
- ▶ Restaurants + Breweries
- ▶ Trolley





# CRUISING THE COLUMBIA

# ILWACO

- ▶ Fuel
- ▶ Groceries
- ▶ Restaurants + Ice Cream
- ▶ Restrooms and Showers (FREE)
- ▶ Laundry
- ▶ Bus to Long Beach
- ▶ Take Discovery trail to the coast



CRUISING THE COLUMBIA

---

# DISCUSSION



